

AeroFix Base rail G2 Eco

The easy way.



ECO

Your benefits at a glance

- The good value base rail of IBC SOLAR
- Space-saving storage thanks to 5 cm narrower rail
- Reduces work steps by utilising pre-assembled structure preservation mats
- Assembly of the supports and butt connectors is identical to the IBC AeroFix System
- Available in 2.2 m and 5.4 m lengths

concrete slabs and gravel roofs where large-area load distribution is not required. Of course, the base rail can also be utilised on bitumen membranes and foil coverings when the insulation indicates the necessary compressive strength.

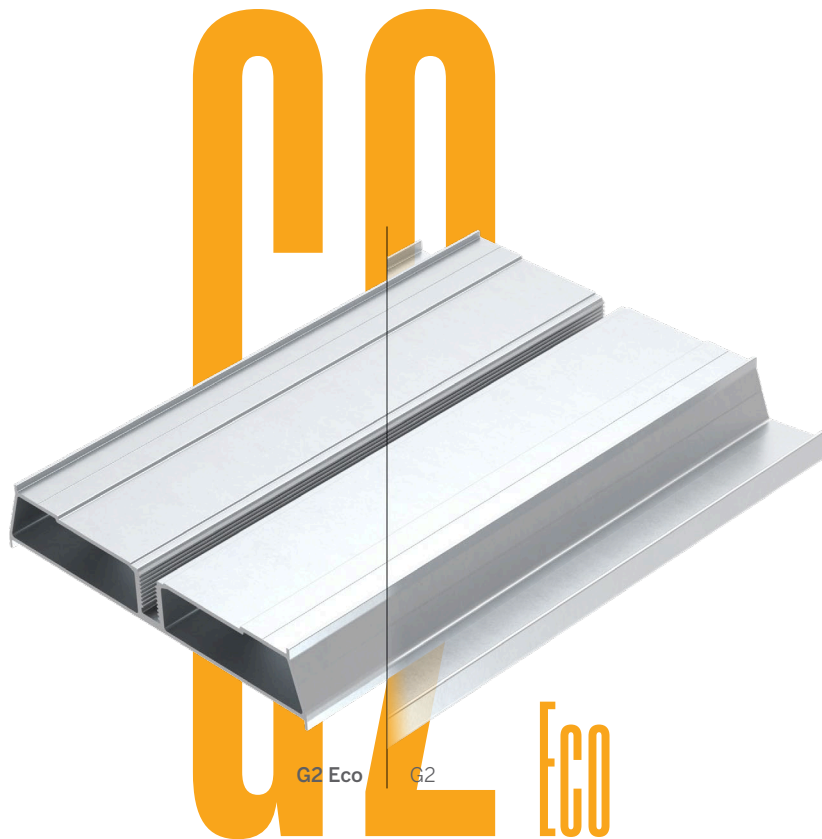
The G2 Eco base rail is equipped with a narrower support surface, is better value due to material savings and additionally saves storage space. The new G2 Eco is especially simple to handle - structure preservation mats are pre-assembled, butt connectors and supports must be secured on the base rail. In order to guarantee a high degree of flexibility with different module field dimensions, the G2 Eco is available in two lengths: 2.2 m and 5.4 m. The base rails can be easily joined together. Due to the narrow support surface, the G2 Eco is especially suitable for stable

WEBINAR

Our new economical mounting solutions – advantages and application areas.

28.07.2020 4.00 p.m. **27.08.2020** 4.00 p.m.





Technical data

Parameters	Value
Material	Aluminium blank, EN AW 6063 T66
Width	130 mm
Height including structure preservation mat	35 mm
Length	2.2 m or 5.4 m